

DATA WAREHOUSE

STUDENT DATA USER GROUP

JULY 15, 2020

Remote Meetings Best Practices

- Turn off your BlueJeans video function
- Please go on **Mute** unless you are speaking
- During the Q&A, please **enter your questions in the chat function**. When your question is being answered, you can go off **Mute** to ask follow-up questions
- Please do not use the chat function for commentary

Agenda

- Project Update
 - Production go-live dates
 - Student Warehouse development and testing
 - Student Warehouse production releases
 - Financial Aid data warehouse
- Pennant Student Universe – updates on design and coming attractions

But first... a small STDTCANQ Universe Change

Join from Course Section to Enrollment was modified

- Previously an “equi” join, now an “outer” join
- Query result rows will now remain even when no students are enrolled in a course section.
- Example Class list for 2020C where Course Section=CHIN721401.

Project updates

- The Pennant Records and Financial Aid projects are delayed 1 year
- Financial Aid and Pennant Records (Courses, instructors) Release 1 scheduled for August 2021
- Financial Aid and Pennant Records Release 2 (Students, Academic History, Enrollments) scheduled for March 2022

Development updates

- Development for the Student Data Warehouse ***will continue as scheduled*** – currently about 85% complete
- Some outstanding questions on individual data elements
- Testing may require some amount of re-work to definitions and table structures

Testing Timeline

DEV warehouse collection released to working group in January

Wider release to SDUG in July

- Courses and Instructors, basic student data
- will include WebI universe and some documentation
- corporate documents rolled out sometime after that

R2 (student, academic history) data available sometime Fall of 2020 (schedule TBD)

Production Releases

August 2021 –

- course and section information available in new warehouse
- future terms (Summer 2022 and beyond) will be reported from the new course structures

March 2022 –

- Full conversion of all SRS (and other systems) into Banner – new student warehouse available
- SRS is still system of record – Banner is used for advanced registration for future terms (Summer 2022 and beyond)
- May/June 2022 – final conversion of SRS student data into Banner – all student reporting comes from new student data warehouse collection

Financial Aid Data Warehouse

Kick off for FA data warehouse scheduled for July 20th, 2020

Initial working group include representation from:

- Institutional Research
- Financial Aid
- Enterprise Information & Analytics

New universe: Pennant Student Records

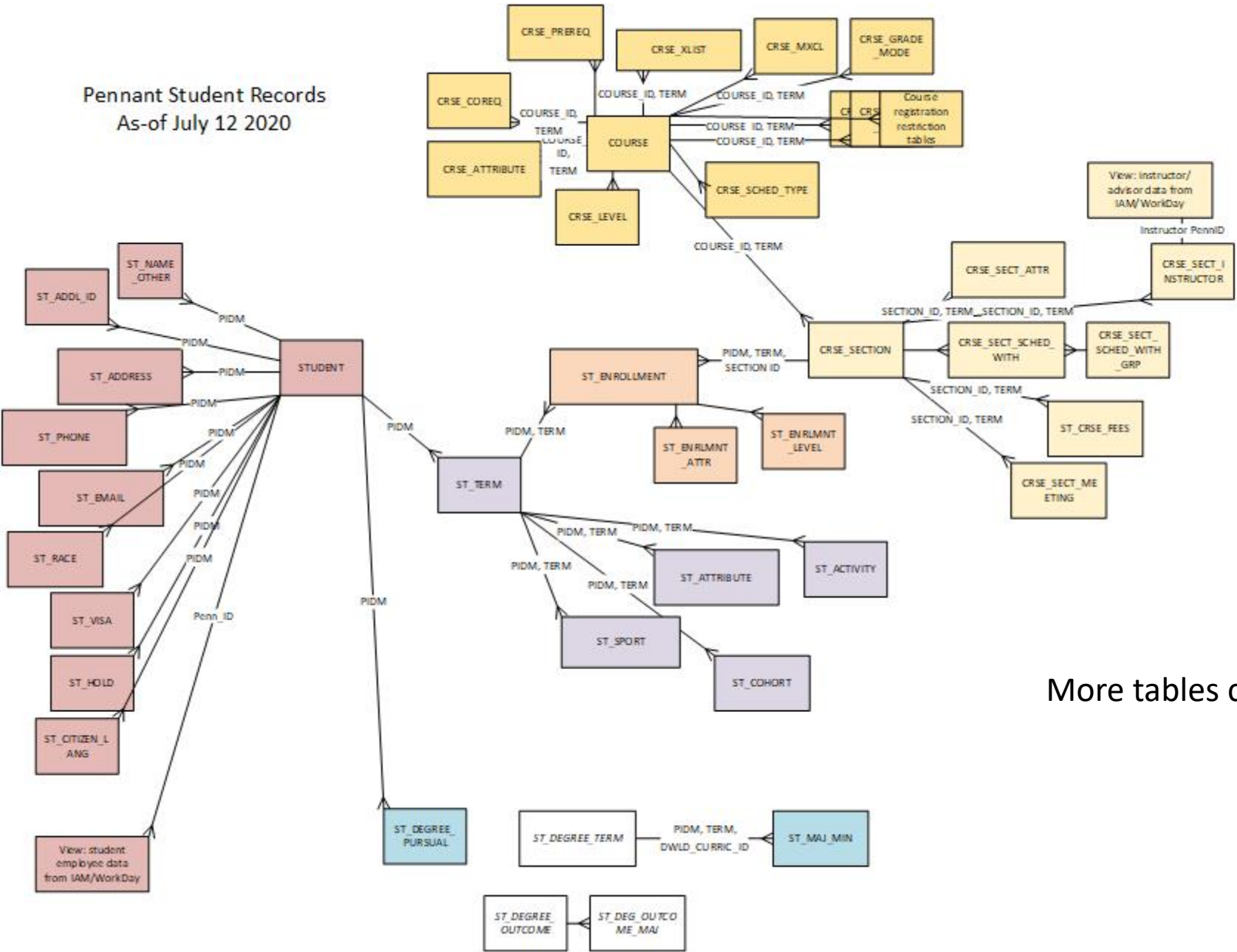
Universe design

- Structure is approximately 85% complete – more folders and objects will be added as the project moves forward

Setup & security

- The universe is currently pointing to the development warehouse: DWHE
- We will put everyone currently in the Webi Student Data Users security folder into the group that can use this universe.
 - If you can access Student Data in prod today, you will be able to launch a Webi report using the development Pennant Student Records universe.
 - In DWHE, we're using a hard-coded password for this universe. Once the universe is ready to move to production, it will use each user's own login credentials.

Pennant Student Records As-of July 12 2020



More tables coming soon...

Universe demo....

Using the new universe...

Remember: we are in a DEVELOPMENT environment

- “Missing or wrong data?” that’s to-be-expected.
 - When you run queries you will notice that some tables are completely empty, and most (probably all!) will not match the real SRS data. So please don’t worry if you don’t see data in any particular table, or if you don’t see “your” students.
- “Weird lookups?” also to-be-expected.
 - The validation tables are also still being worked on, so please don’t worry if you don’t see a value in a lookup table that you are expecting to see.

Expect changes

- We are working on additional tables, and changing the existing structure every day, so don’t be alarmed if something moves around or something new shows up. We will try to keep this Student Data User Group apprised of new developments when something major happens, but in the interest of keeping too much “noise” off the student-wh discussion listserv, we won’t be sending out an alert every time something changes!

So what *can* you do, in this still-under-construction universe?

Play

- See if you are able to start a new report using this universe
- Poke around and see if you can create a simple query

Ask questions

- The development team is actively working on a lot of things and we may not have time to answer everyone's questions in a timely manner. But that doesn't mean you shouldn't ask!
- Send your questions to squant@upenn.edu or budischa@upenn.edu. We will collect your questions and will try to address as many as we can, either in a newsletter format sent out to everyone via the listserv, or at the next SDUG meeting.

Wrap-up

- Questions/comments
- Feedback about holding SDUG meetings online
 - How did today go?
 - Suggestions for future online meetings?
- As always, follow-up questions/comments after SDUG meetings can be sent to: da-staff@isc.upenn.edu Discussions about student data can be initiated by writing to our moderated list: student-wh@lists.upenn.edu