

DATA WAREHOUSE

STUDENT DATA USER GROUP

MARCH 25, 2020

Remote Meetings Best Practices

- Turn off your BlueJeans video function
- Please go on **Mute** unless you are speaking
- During the Q&A, please **enter your questions in the chat function**. When your question is being answered, you can go off **Mute** to ask follow-up questions
- Please do not use the chat function for commentary

Agenda

- Project Update
- Development status and Testing timeline
- Timing for Production Releases
- Misc Items – Not Converted/Converted, FinAid collection
- Pennant Student Universe – Design, documentation

Project updates

- The Pennant Records and Financial Aid projects are delayed 1 year
- Financial Aid and Pennant Records (Courses, instructors) Release 1 scheduled for August 2021
- Financial Aid and Pennant Records Release 2 (Students, Academic History, Enrollments) scheduled for March 2022

Development updates

- Development for the Student Data Warehouse ***will continue as scheduled*** – currently about 80% complete
- Some outstanding questions on individual data elements
- Testing may require some amount of re-work to definitions and table structures

Testing Timeline

DEV warehouse collection released to working group in January

Wider release to SDUG in April/May timeframe

- should be *fully converted data* of R1 data (courses, instructors)
- will include WebI universe and some documentation
- corporate documents rolled out sometime after that

R2 (student, academic history) data available sometime Summer of 2020 (schedule TBD)

Production Releases

August 2021 –

- course and section information available in new warehouse
- future terms (Summer 2022 and beyond) will be reported from the new course structures

March 2022 –

- Full conversion of all SRS (and other systems) into Banner – new student warehouse available
- SRS is still system of record – Banner is used for advanced registration for future terms (Summer 2022 and beyond)
- May/June 2022 – final conversion of SRS student data into Banner – all student reporting comes from new student data warehouse collection

Other items

Non-converted population

- The initial conversion population of students is being re-evaluated
- At go-live, only students who were converted to Banner will be available in the new warehouse collection – non converted students will be in the current student data warehouse
- There will be a conversion of the remaining population into the new warehouse structures post go-live of Release 2

Financial Aid

- kick off for FA warehouse design in April

New universe: Pennant Student Records

Universe design

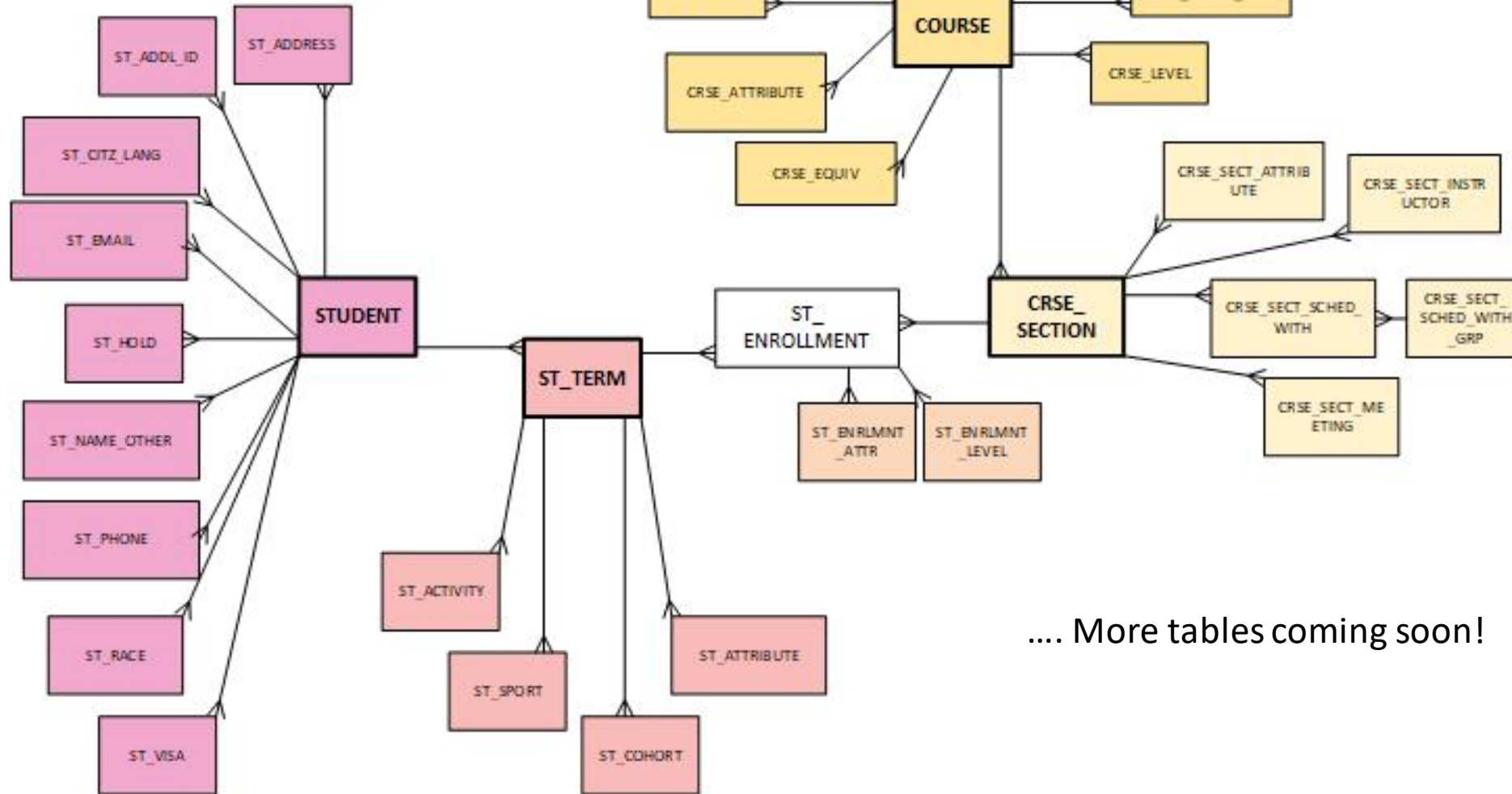
- Partially complete – more will be added as the project moves forward
- Does not exactly mirror STDTCANQ, but maintains core functionality

Setup & security

- The universe is currently pointing to the development warehouse: DWHE
- Small advisory group is doing initial testing
- All underlying tables and views are granted to the SCHOOL_ROLE
- Student and Course data tables are in schema DWNGSS_PS
- Validation (“lookup”) tables and shared Rules tables are in schema DWNGSS

PENNANT STUDENT RECORDS universe

Schema: DWNGSS_PS In DWHE as of March 2020



.... More tables coming soon!

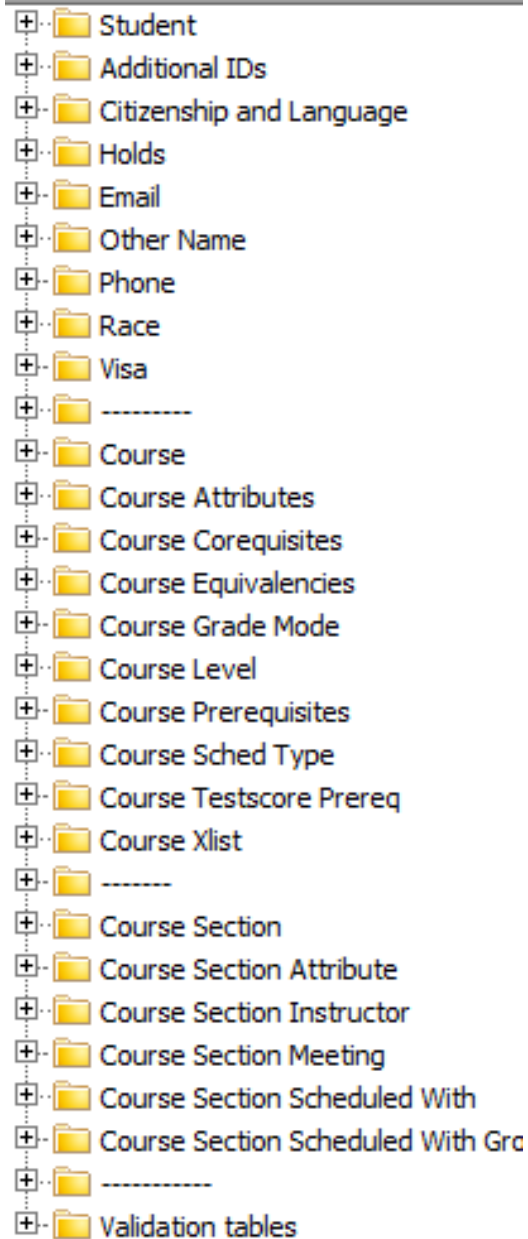
PENNANT STUDENT RECORDS

universe – lookup tables

...in schema: DWNGSS as of March 2020

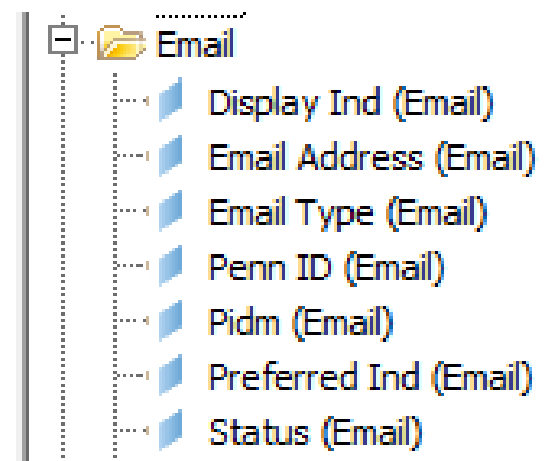
V_ACADEMIC_AWARD_CAT	V_ADMIT_TYPE	V_COMMITTEE_TYPE	V_DEPARTMENT	V_HS_SUBI	V_MARITAL	V_QUALIFYING_TYPE	V_SCHED_TYPE	V_TEST
V_ACADEMIC_STANDING	V_ADVISOR_TYPE	V_CONCENTRATION	V_DIVISION	V_INST_ACADEMIC_HONORS	V_NAME_TYPE	V_RACE	V_SCHOOL	V_TIME_STATUSES
V_ACADEMIC_YEAR	V_BUILDING	V_COUNTRY	V_EMAIL_TYPE	V_INSTITUTION	V_NATIVE_CURRENCY	V_RATE	V_SITE	V_TRANSCRIPT_EVENT
V_ACTIVITY	V_CAMPUS	V_COURSE_PROGRAM_ATTR	V_EXAM_TYPE	V_INSTRUCTOR_METHOD	V_NON_COURSE_REQ	V_REG_SPEC_APPROPR	V_STATE	V_US_COUNTY
V_ACTIVITY_CATEGORY	V_CIPC	V_CURRICULUM_STATUS	V_EXIT_ACTION	V_INSTRUCTOR_CATEGORY	V_ORIG_DEPT	V_REG_STATUS	V_STUDENT_ATTR	V_VETERAN_TYPE
V_ACTIVITY_TYPE	V_CITIZENSHIP_TYPE	V_DEG_DEPT_HONORS	V_FAC_STAFF_TYPE	V_LANGUAGE	V_PART_OF_TERM	V_RELATION	V_STUDENT_LEVEL	V_VISA_TYPE
V_ADDITIONAL_ID	V_CLASS	V_DEGREE	V_GENDER	V_LEARNER_METHOD	V_PHONE_TYPE	V_RELIGION	V_STUDENT_TYPE	
V_ADDR_SOURCE	V_COMBINED_ACADEMIC_STAND	V_DEGREE_LEVEL	V_GRADE_MODE	V_LEGACY	V_PREF_PROMOTION	V_RESIDENCY	V_SUBJECT	
V_ADDRESS_TYPE	V_COMMITTEE_FUNCTION	V_DEGREE_STATUS	V_HOLD	V_MAJOR_MINOR	V_PROGRESS_EVAL	V_ROOM_ATTR	V_TERM	

... stayed tuned for more...



The new universe has the folders grouped by “type”

Within the folders, objects are listed alphabetically

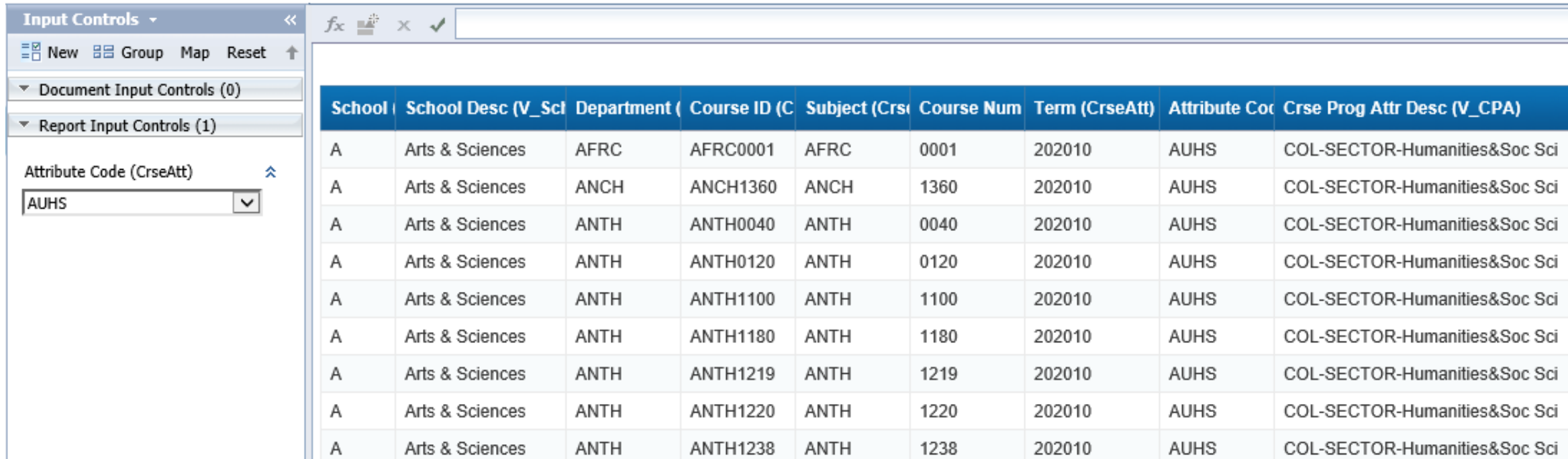


Sample query

The screenshot displays a data query tool interface with three main sections:

- Universe outline:** A tree view on the left showing a hierarchy of data objects. The 'Course Attributes' folder is expanded, listing: Attribute Code (CrseAtt), Course ID (CrseAtt), Course Num (CrseAtt), Effective Term (CrseAtt), Subject (CrseAtt), Term (CrseAtt), Last Activity Date (CrseAtt), and Last Refresh Date (CrseAtt). A search box above the tree contains the text 'Type here to filter on ti'.
- Result Objects:** A central area containing a grid of object buttons. The 'Subject (CrseAtt)' button is highlighted with a dashed border. Other buttons include 'School Desc (V_Schl)', 'Course ID (Crse)', 'Department (Crse)', 'School (Crse)', 'Course Num (CrseAtt)', 'Attribute Code (CrseAtt)', 'Crse Prog Attr Desc (V_CPA)', and 'Term (CrseAtt)'. Navigation arrows are visible on the left side of this section.
- Query Filters:** A section at the bottom containing a filter for 'Term (CrseAtt)'. The filter is set to 'In List' with a dropdown arrow and the value '202010' entered in the text field. A menu icon is visible to the right of the text field.

Sample query output



School	School Desc (V_Sci)	Department	Course ID (C)	Subject (Crse)	Course Num	Term (CrseAtt)	Attribute Code	Crse Prog Attr Desc (V_CPA)
A	Arts & Sciences	AFRC	AFRC0001	AFRC	0001	202010	AUHS	COL-SECTOR-Humanities&Soc Sci
A	Arts & Sciences	ANCH	ANCH1360	ANCH	1360	202010	AUHS	COL-SECTOR-Humanities&Soc Sci
A	Arts & Sciences	ANTH	ANTH0040	ANTH	0040	202010	AUHS	COL-SECTOR-Humanities&Soc Sci
A	Arts & Sciences	ANTH	ANTH0120	ANTH	0120	202010	AUHS	COL-SECTOR-Humanities&Soc Sci
A	Arts & Sciences	ANTH	ANTH1100	ANTH	1100	202010	AUHS	COL-SECTOR-Humanities&Soc Sci
A	Arts & Sciences	ANTH	ANTH1180	ANTH	1180	202010	AUHS	COL-SECTOR-Humanities&Soc Sci
A	Arts & Sciences	ANTH	ANTH1219	ANTH	1219	202010	AUHS	COL-SECTOR-Humanities&Soc Sci
A	Arts & Sciences	ANTH	ANTH1220	ANTH	1220	202010	AUHS	COL-SECTOR-Humanities&Soc Sci
A	Arts & Sciences	ANTH	ANTH1238	ANTH	1238	202010	AUHS	COL-SECTOR-Humanities&Soc Sci

Documentation will be added to the existing warehouse website:
<https://www.isc.upenn.edu/enterprise-information-analytics>

under the “Student” area,
in the “Record” section,
there will be a new link
for Pennant Student Records

In the coming months, we will
be looking for volunteers to
assist with editing and reviewing
data documentation....

<i>Student</i>
Data Collection(s)
Admissions: Undergraduate , Graduate
Billing: Pennant Accounts (Fall 2015 -); Legacy Billing (through Summer 2015)
Financial: Financial Aid , Graduate Funding , Tuition Distribution
Records: Student Records System ; Student Term Census Extract ; Academic Planning Worksheets
Other: Course Evaluation ; Career Tracker ; Curriculum Management ; Housing ; Weingarten Learning Resources Center

Wrap-up

- Questions/comments
- Feedback about holding SDUG meetings online
 - How did today go?
 - Suggestions for future online meetings?
- As always, follow-up questions/comments after SDUG meetings can be sent to: da-staff@isc.upenn.edu Discussions about student data can be initiated by writing to our moderated list: student-wh@lists.upenn.edu