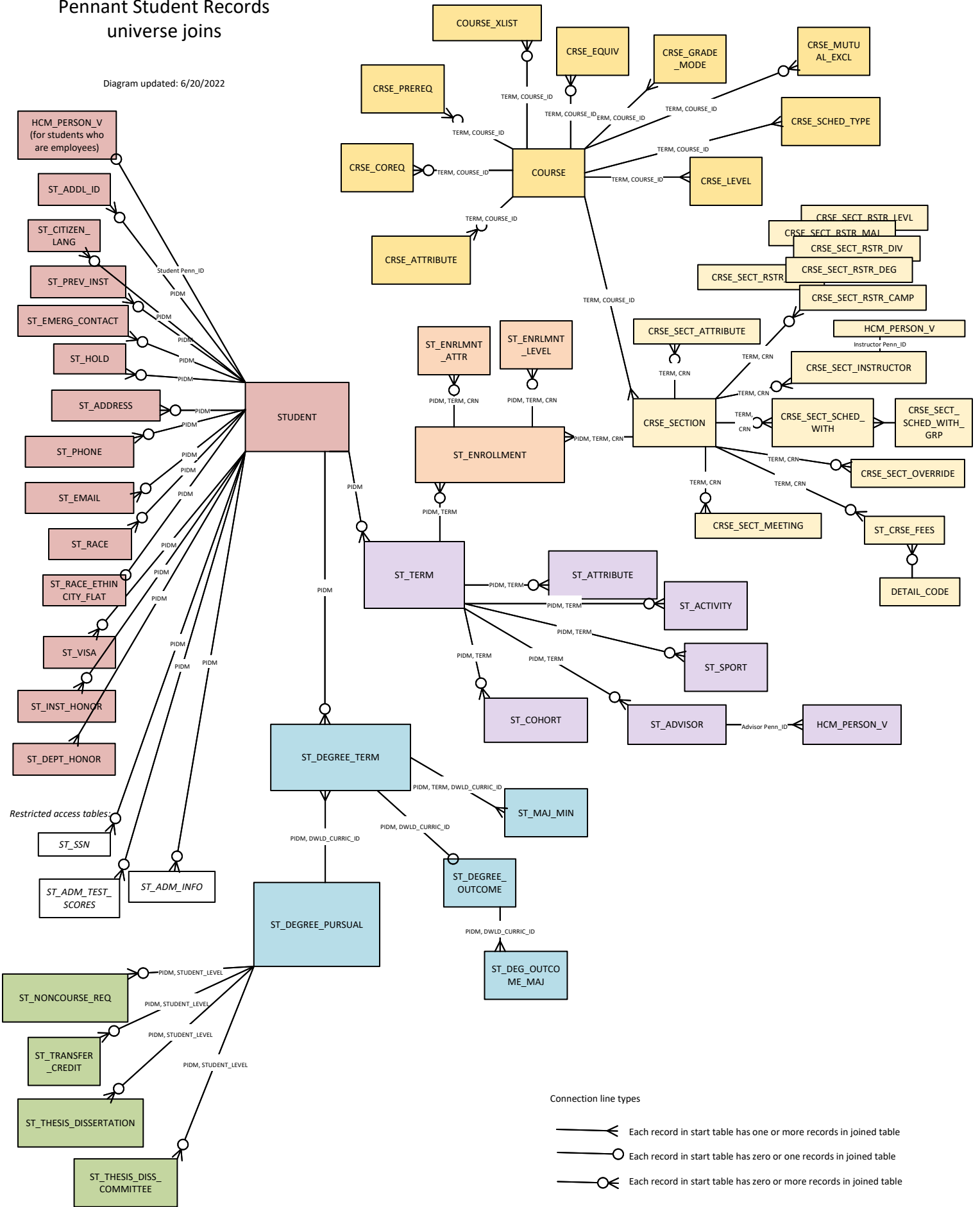


Pennant Student Records universe joins

Diagram updated: 6/20/2022



Connection line types

- Each record in start table has one or more records in joined table
- Each record in start table has zero or one records in joined table
- Each record in start table has zero or more records in joined table

V_ACAD_AWARD_CAT
 V_ACADEMIC_STANDING
 V_ACADEYEAR
 V_ACTIVITY
 V_ACTIVITY_CAT
 V_ACTIVITY_TYPE
 V_ADDITIONAL_ID
 V_ADDR_SOURCE
 V_ADDRESS_TYPE
 V_ADMIT_TYPE
 V_ADVISOR_TYPE
 V_ATHLETIC_ELIG
 V_BUILDING
 V_CAMPUS
 V_CIPC
 V_CITIZENSHIP_TYPE
 V_CLASS
 V_COHORT
 V_COMBINED_ACAD_STAND
 V_COMMITTEE_FUNCTION
 V_COMMITTEE_TYPE
 V_CONCENTRATION
 V_COUNTRY
 V_CRSE_ADMIN
 V_CRSE_PROG_ATTR
 V_CRSE_REG_PRIORITY
 V_CRSE_TERMS_OFFR
 V_CURRICULUM_STATUS
 V_DEG_DEPT_HONORS
 V_DEGREE
 V_DEGREE_LEVEL
 V_DEGREE_STATUS
 V_DEPARTMENT
 V_DIVISION
 V_EMAIL_TYPE
 V_EXAM_TYPE
 V_EXIT_ACTION
 V_FAC_STAFF_TYPE
 V_GENDER
 V_GRADE_MODE
 V_HOLD
 V_HS_SUBJ
 V_INST_ACAD_HONORS
 V_INSTITUTION
 V_INSTRUCT_METHOD
 V_INSTRUCTOR_CATEGORY
 V_LANGUAGE
 V_LEARNER_MOD
 V_LEGACY
 V_MAJOR_MINOR
 V_MARITAL
 V_NAME_TYPE
 V_NATIVE_CURRENCY
 V_NON_CRSE_REQ
 V_ORIG_DEPT
 V_PART_OF_TERM
 V_PHONE_TYPE
 V_PREF_PRONOUN
 V_PROGRAM
 V_PROGRESS_EVAL
 V_QUALIFYING_TYPE
 V_RACE
 V_RATE
 V_REG_SPEC_APPR
 V_REG_STATUS
 V_RELATION
 V_RELIGION
 V_RESIDENCY
 V_ROOM_ATTR
 V_SCHED_STATUS
 V_SCHED_TYPE
 V_SCHOOL
 V_SITE
 V_SPORT_STATUS
 V_STATE
 V_STDNT_ATTR
 V_STDNT_LEVEL
 V_STDNT_TYPE
 V_SUBJECT
 V_TERM
 V_TEST
 V_TIME_STATUS
 V_TRANSCRIPT_EVENT
 V_US_COUNTY
 V_VETERAN_TYPE
 V_VISA_TYPE

All validation (“lookup”) tables are in the universe as stand-alone objects, that can optionally be included in reports by joining to the code in the table. NOTE: In many cases, this will not be necessary since the student and course tables have a great many of the commonly-used codes already decoded in the table. For example, in ST_TERM, the division, degree, school and program codes have their respective descriptions stored in ST_TERM alongside the code, so a lookup to the validation tables is not needed.

XWALK_CRSE_NUMBER

The course re-numbering crosswalk table can be used to find the old SRS course number

XWALK_GTVSDAX

Table containing the values for current academic term and other academic terms; used to populate DWADMIN.PRESENT_PERIOD